

# Florence County Timber Sale Map

## Shins Pond Sale



### Legal Descriptions

**Block #1** Pt of SWSW Sec 27 &

Pt of NWNW Sec 34 T.38N R18E

**Block #2** Pt of NWNE, SWNE Sec 34 T.38N R18E

Town of Homestead Florence, Co. WI

### Harvest Requirements

#### Block #1- Aspen Coppice- 39 ac

- Cut all stems 2" and larger
- Do not cut red pine, white pine, hemlock, cedar, or trees marked with green paint.
- Do not cut standing dead trees
- Harvesting allowed year round as long as rutting does not occur.

#### Block #2- Aspen Coppice- 8 ac

- Cut all stems 2" and larger
- Do not cut red pine, white pine, hemlock, cedar, or trees marked with green paint.
- Do not cut standing dead trees
- Harvesting allowed only with dry or frozen ground

### General Harvest Requirements

#### Slash:

- Must be kept 10' from woods roads
- Loped within 2' of ground
- Not allowed across harvest boundaries

#### Cordwood

- Cruised to a 4" top

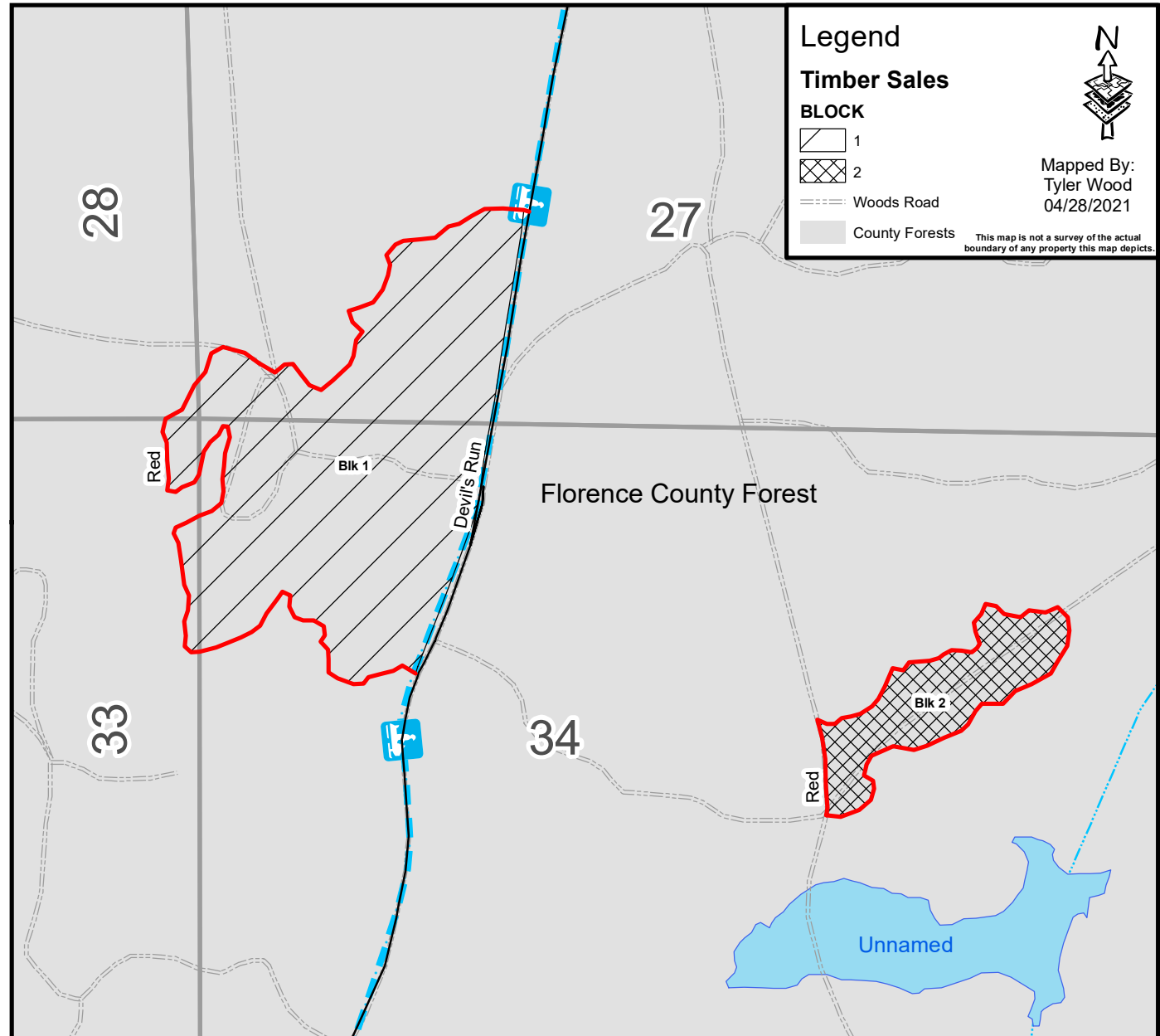
### Contract information

- Contract length: 2 years
- Sale method: lump sum

### Volume Estimates

Species	Pulp/Bolts
Aspen	950
Oak	65
MX Hwd	60
Jack Pine	1
<b>Total</b>	<b>1076</b>

Scale:	1:7,920
Acres:	47
Tract #	6-21
Advert #	1
Prepared by:	TW,TZ
Date:	04/26/2021
Contract #:	



### Legend

#### Timber Sales

##### BLOCK

- 1
- 2

Woods Road

County Forests

This map is not a survey of the actual boundary of any property this map depicts.

Mapped By:  
Tyler Wood  
04/28/2021