



# Florence County Timber Sale Map

## Camp 12 Sale

### Legal Descriptions

All Block: Pt of Sec 32 T.38N R19E  
Town of Aurora Florence, Co. WI

### Harvest Requirements

#### Block #1- Cedar Strip Clear Cut

- Cut all stems regardless of merchantability
- Do not cut standing dead trees

#### Block #2- Clear Cut

- Cut all stems 2" and larger
- Do not cut red pine, white pine, hemlock, or trees marked with green paint.
- Do not cut standing dead trees

### General Harvest Requirements

#### Slash:

- Must be kept 10' from woods roads
- Loped within 2' of ground
- Not allowed across harvest boundaries

#### Cordwood

- Cruised to a 4" top

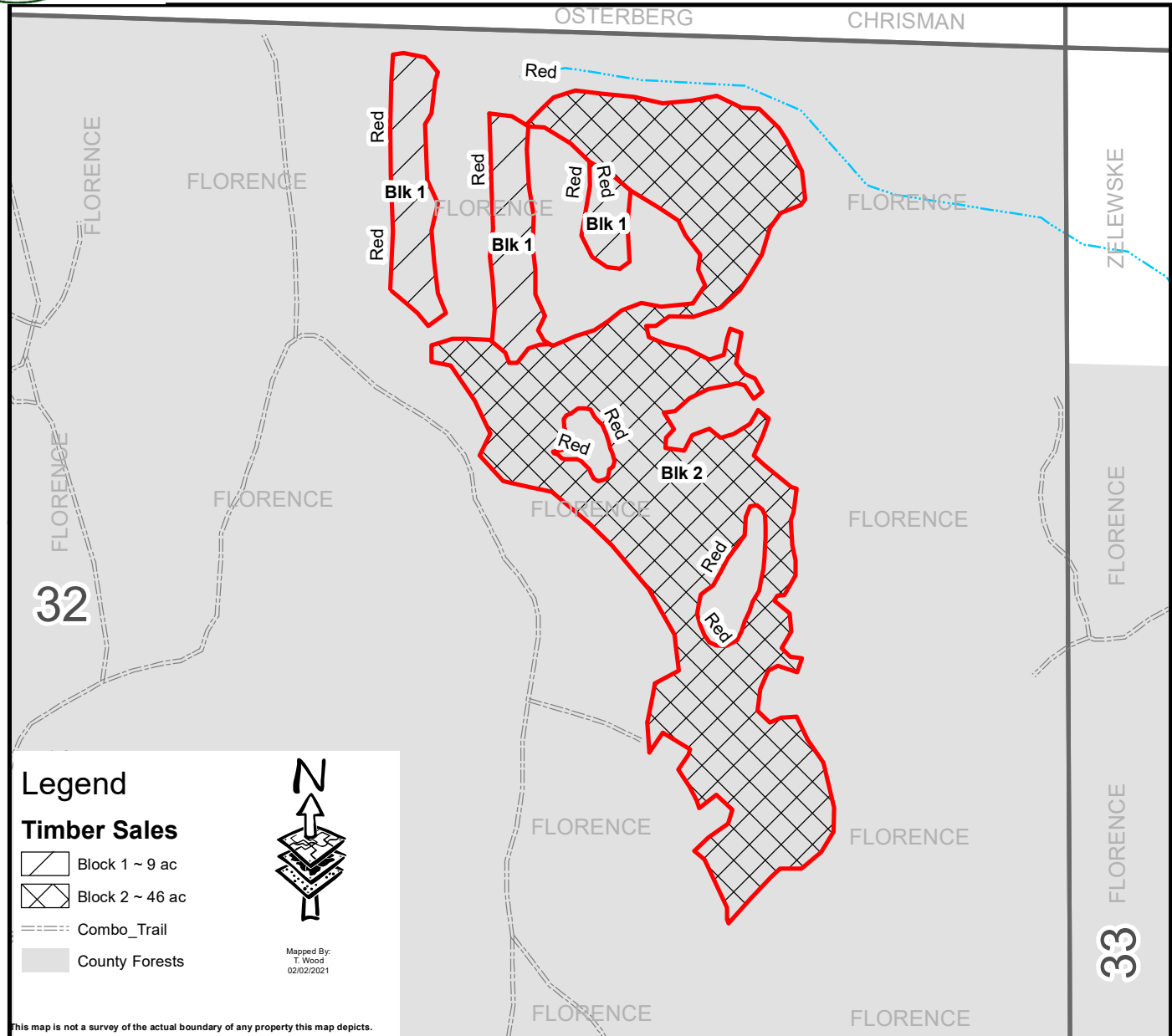
### Contract information

- Contract length: 2 years
- Harvesting allowed during frozen ground conditions only
- Sale method: Scale

### Volume Estimates

Species	Pulp/Bolts	Logs (MBF)
Aspen	20	
Mixed Hardwoods	130	1
Spruce/Fir	40	
Black Spruce	230	
Cedar	550	
Black Ash	75	
Tamarack	140	
<b>Total</b>	<b>1185</b>	<b>1</b>

Scale:	Scale
Acres:	55
Tract #	5-21
Advert #	7
Prepared by:	TW,TZ
Date:	02/02/2021
Contract #:	



This map is not a survey of the actual boundary of any property this map depicts.